

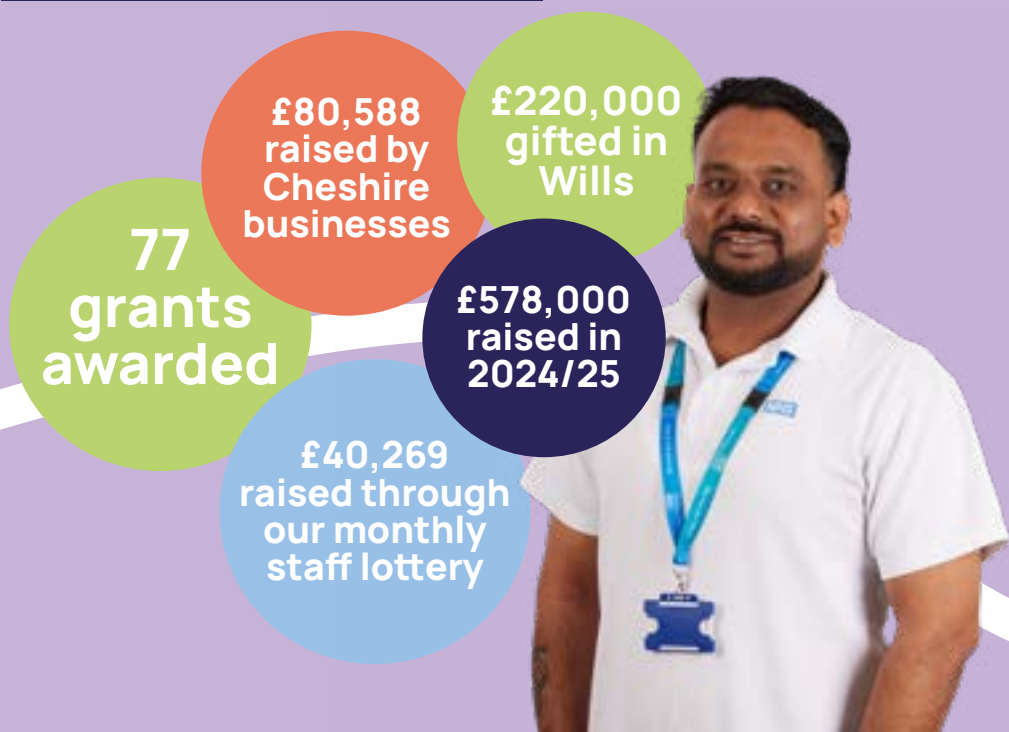
# Making a Difference in the Moments That Matter



## Our Mission

From the little things that make a big difference to world-class technology that transforms treatment - we enhance the care and services Mid Cheshire Hospitals NHS Foundation Trust and Community Services can provide, above and beyond what the NHS can offer.

## Our 2024/25 Year at a Glance



## A Message from Emma Robertson, Head of MCH Charity

### Making a Difference in the Moments That Matter

Every day across our hospitals and community services, moments happen that truly matter - a reassuring smile, a comforting hand, or the relief of new equipment that helps deliver outstanding care.

MCH Charity exists to enhance care and experience for everyone who uses our local hospitals and NHS community services. Thanks to your generosity, we've been able to make a remarkable difference throughout 2024/25 - funding advanced medical technology, creating uplifting spaces for patients and staff, and supporting compassionate end-of-life care for local families.

This report is a celebration of you - our patients, supporters, loved ones, local businesses, and NHS colleagues - whose kindness and commitment continue to transform experiences across Mid Cheshire Hospitals.

As we look ahead, we do so with deep gratitude and optimism - inspired by what we've achieved together and united in our purpose to keep making a difference in the moments that matter most.



With gratitude,  
**Emma Robertson**



## Supporting Families at the End of Life

We only get one chance to get it right. That's why we invested **£140,000** this year to improve end-of-life care.

- Sleeper chairs and beds so families can stay close
- Memory-making items for comfort and healing
- Complementary therapies to ease anxiety at home
- Funding a SWAN Volunteer Coordinator - ensuring no one spends their final days alone



### Voices of Impact

**"For one hour, I felt totally normal and could switch off from my medical situation."**

Patient receiving therapies

**"I can't say how grateful I am for the kindness of SWAN volunteers. Time and companionship is the most precious gift."**

Daughter

**"The complementary therapies were unbelievably beneficial for my husband... to have the option at home meant everything."**

Family member



## Giving Newborns the Best Start

For our tiniest patients on the Neonatal Unit, we invested **£100,000** in life-saving technology - a cooling mattress and brain monitor. These tools help prevent long-term brain damage in babies deprived of oxygen at birth, while also allowing parents to bond during critical care.



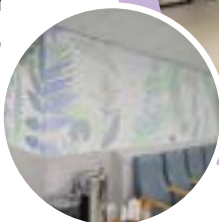
## Calming Children in Hospital

Hospital visits can be daunting for children. That's why we created a **£70,000** child-centric waiting area at Victoria Infirmary - a calming, stimulating environment that helps young patients and their families feel more at ease.



## Transforming Urology Care

Patients in our Urology department are now benefiting from **£170,000** of cutting-edge equipment. This investment has improved cancer detection, enhanced diagnoses, and made procedures like prostate biopsies more accurate and comfortable.



## Bringing Sunshine to a Difficult Time with Live Music

Our charity funded Arts Programme commissioned a Musicians in Residence project which places professional musicians directly on wards, bringing warmth, distraction, and joy to patients, families, and staff. Over the course of 12 weeks, musicians visited wards weekly, performing everything from soothing classical guitar to uplifting folk songs. Patients often joined in, requested favourites, or simply relaxed as the music washed over them.

Research shows that live music reduces stress, improves mood, and supports recovery - and we saw that first-hand. Staff also took part in training to weave music-based activities into daily care, developing new skills and confidence in using creative approaches with patients.



### The impact in numbers:

- **42** live music sessions and performances delivered
- **339** patients directly benefited
- **13** staff supported the programme
- **5** wards received a Badge of Excellence in the Use of Music in Care and Health
- An estimated **2,500** patients, staff, and visitors felt the benefit of live music

### Voices of Impact

“They’re not having to think about their treatment... they’re just enjoying some live music.”

“That was the first time I’ve seen him smile since we’ve been here.”

92% of cancer patients surveyed said it reduced their anxiety



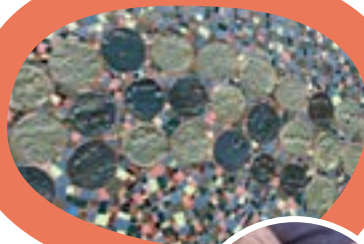
arts

at Mid Cheshire Hospitals



## Creative Rehabilitation

With artist Debbie Goldsmith, patients on the rehabilitation ward created clay artworks, supporting dexterity and cognitive skills and helping to relieve anxiety and boredom. These were combined into a mosaic for the ward gardens - a lasting legacy for patients and staff.



## Festive Joy

From dementia-friendly performances with music and dance to our Light up Leighton campaign, we brought joy, colour, and comfort to patients and staff during the festive season.

- Courtyards transformed with sparkling lights and trees
- Interactive performances filling wards with laughter and song
- Families and staff shared how decorations and performances lifted spirits at a difficult time



## Looking Ahead

Together, we've enhanced care in ways big and small - but there's so much more we can do. With your continued support, we'll keep making memorable moments possible for patients, families, and staff across Mid Cheshire Hospitals NHS Foundation Trust.

## Stay Connected

Want to hear more about the work we do and the lives we touch? Sign up for our newsletter via the website to receive updates by post or email.

Visit: **mchcharity.org**

Email: **charity@mcht.nhs.uk**

Call: **01270 273248**

Socials: **@mchcharity**

Address: Leighton Hospital,  
Middlewich Road, Crewe,  
Cheshire, CW1 4QJ

## Donate Today

**Online - [mchcharity.org/donate](https://mchcharity.org/donate)**

**Cash** - drop off at our office  
(please call ahead on 01270 273248  
to make sure someone is available  
to accept the donation).

**Cheque** - made out to Mid Cheshire  
Hospitals Charity, send to our  
address including a cover note with  
your details.

**Bank transfer** - please ensure that  
you email us ([charity@mcht.nhs.uk](mailto:charity@mcht.nhs.uk))  
to provide contact details so  
we can confirm with you that we  
have received it.

Bank: Barclays

Sort Code: 20 07 71

Account Number: 93069451

Account Name: MCH CHARITABLE

**With a bank card** - call 01270 273248  
to donate over the phone, or use  
our 'tap to donate' station at  
Leighton Hospital.

For more information visit:

**mchcharity.org**

  **mchcharity**



Registered with



FUNDRAISING  
REGULATOR